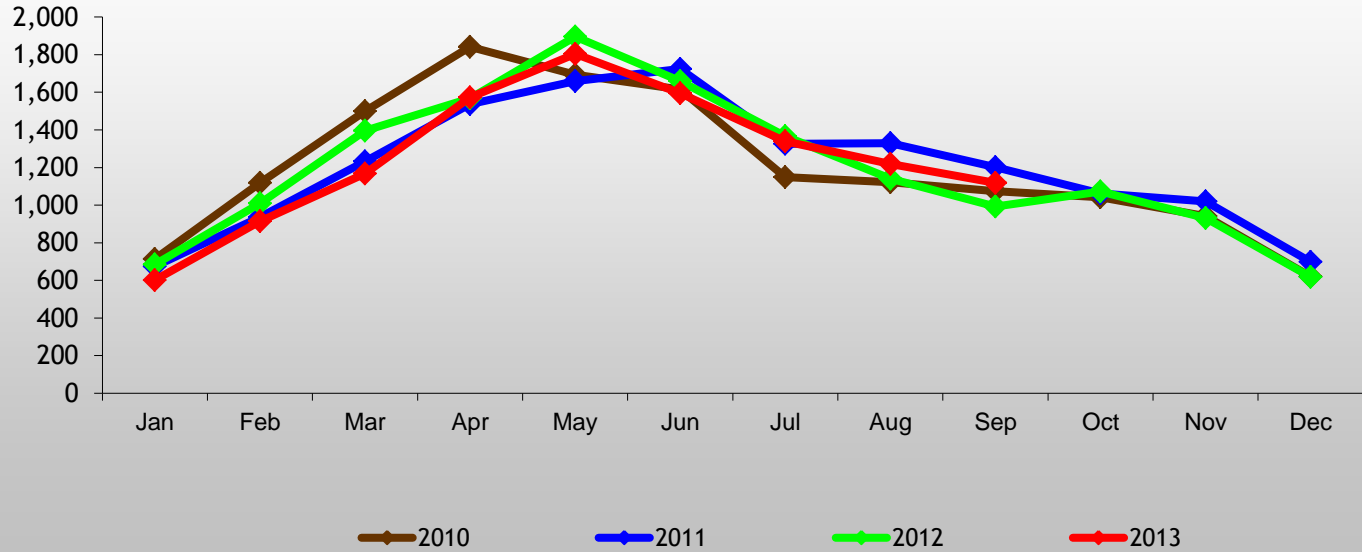


Ottawa MLS® Unit Sales

Units

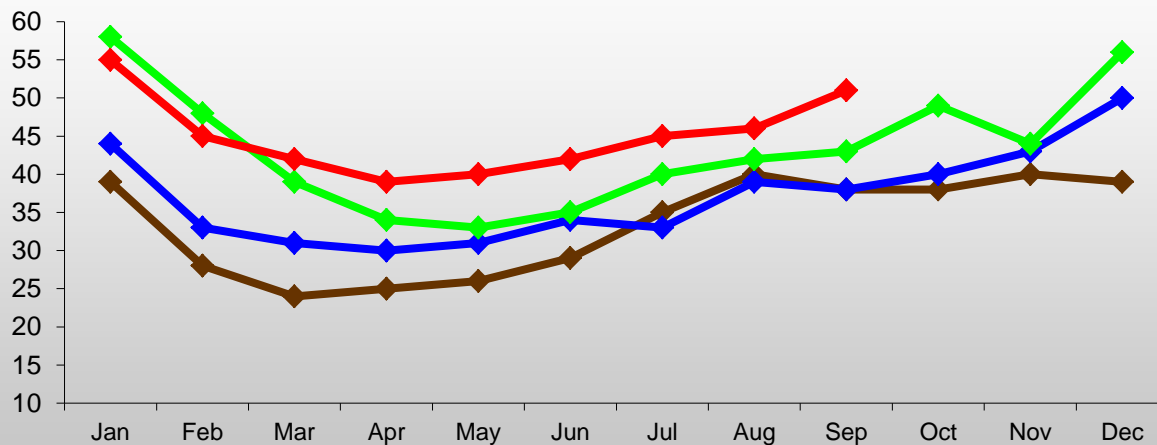


Source: OREB

Royal LePage Performance Realty

Average Selling Time

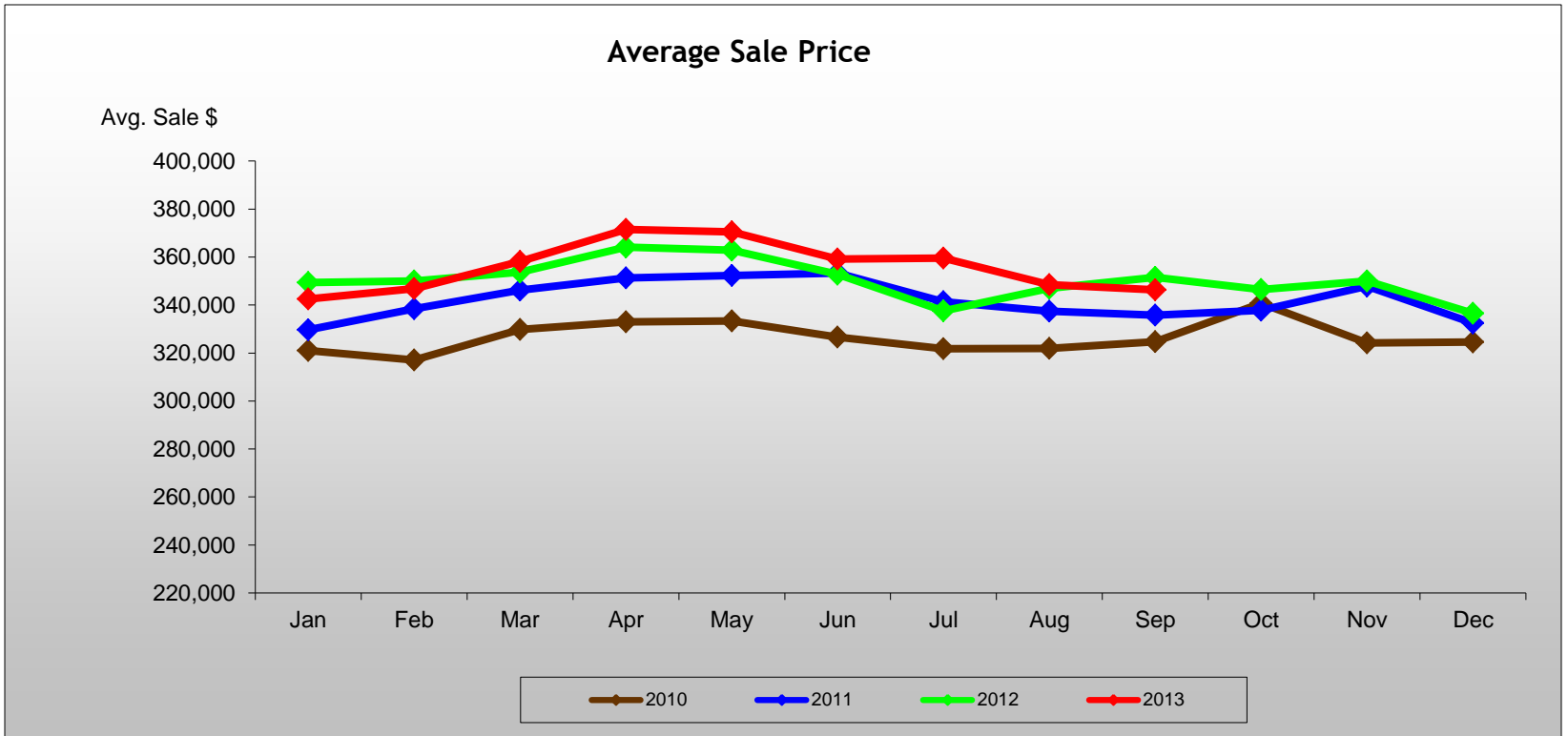
Days



—◆— 2010 —◆— 2011 —◆— 2012 —◆— 2013

Source: OREB

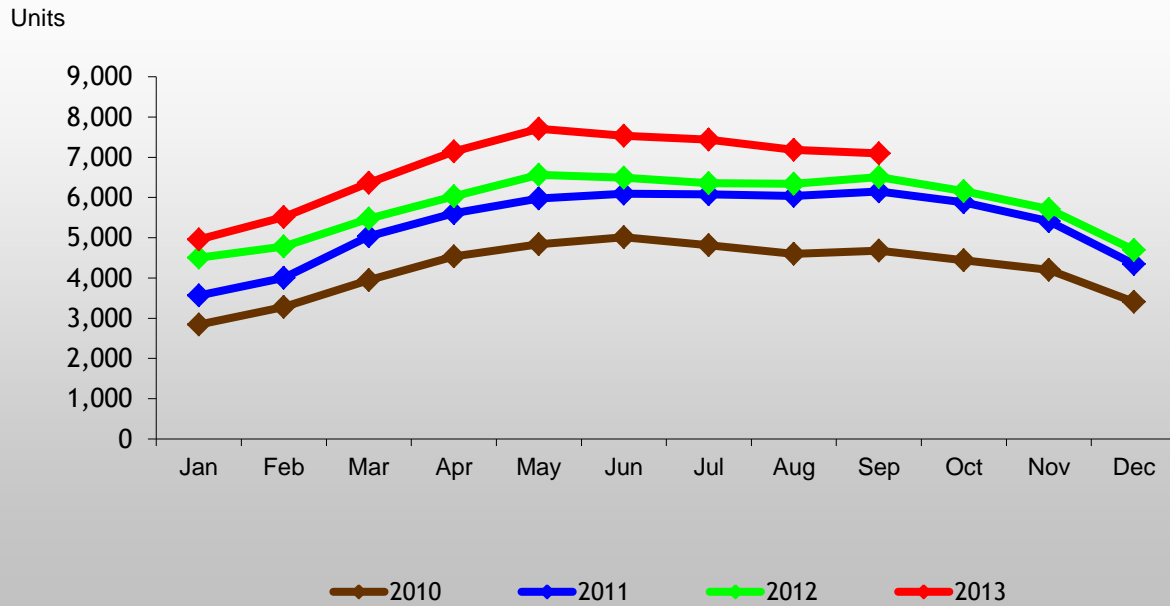
Royal LePage Performance Realty



Source: OREB

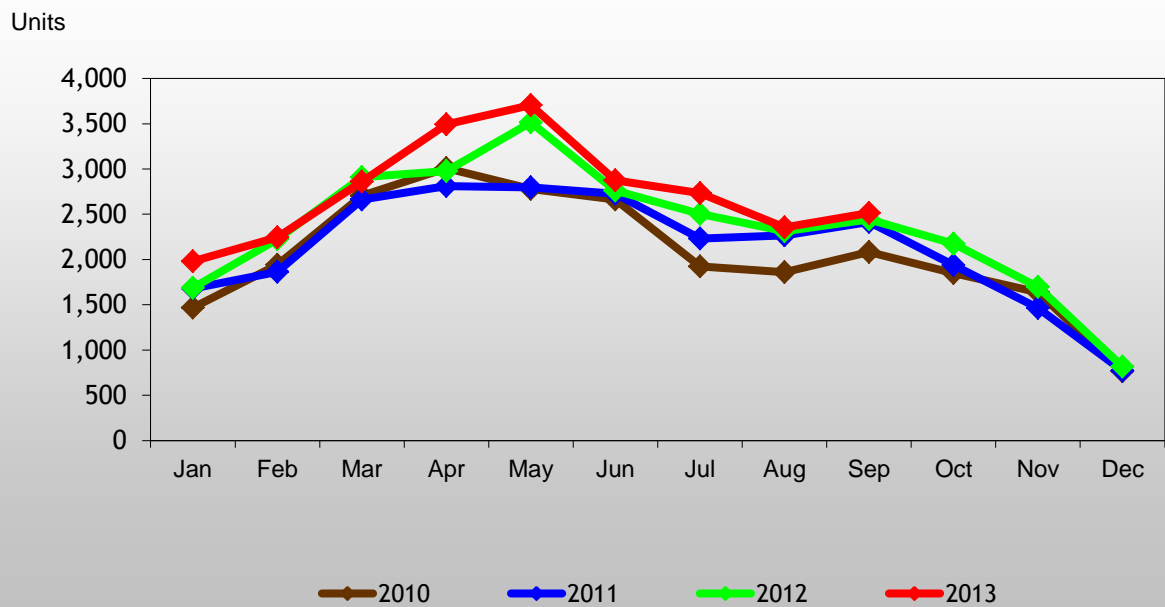
Royal LePage Performance Realty

Ottawa MLS® Listing Inventory



Source: OREB

Ottawa MLS® ListingsTaken



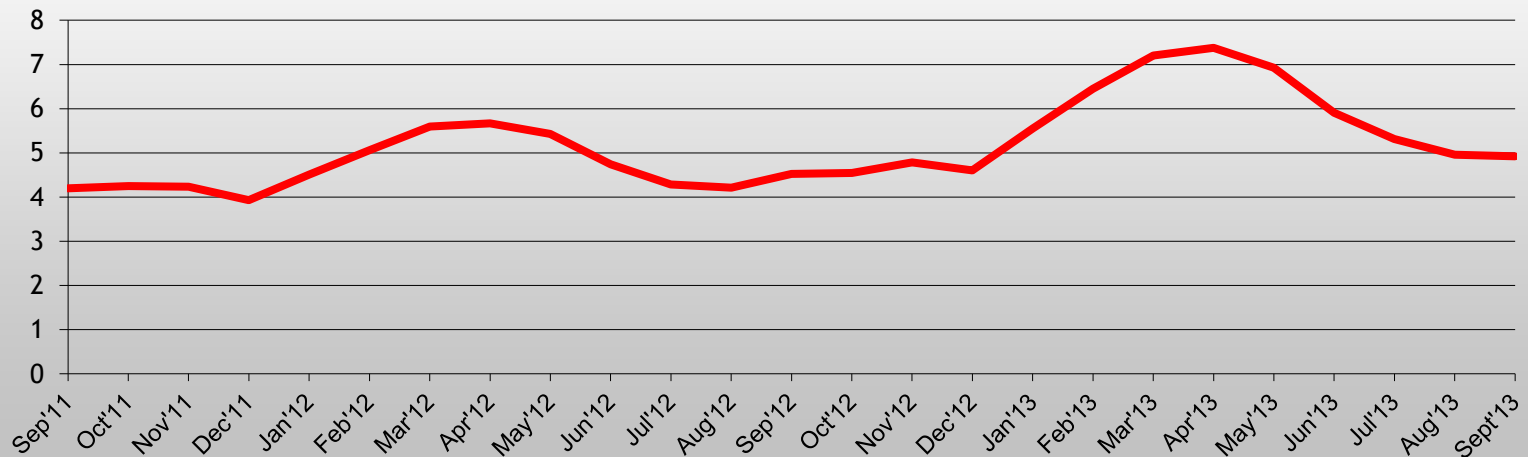
Source: OREB

Royal LePage Performance Realty

Inventory Absorption Rate

The absorption rate is the # of months it would take to sell off existing listing inventory at current pace of sales

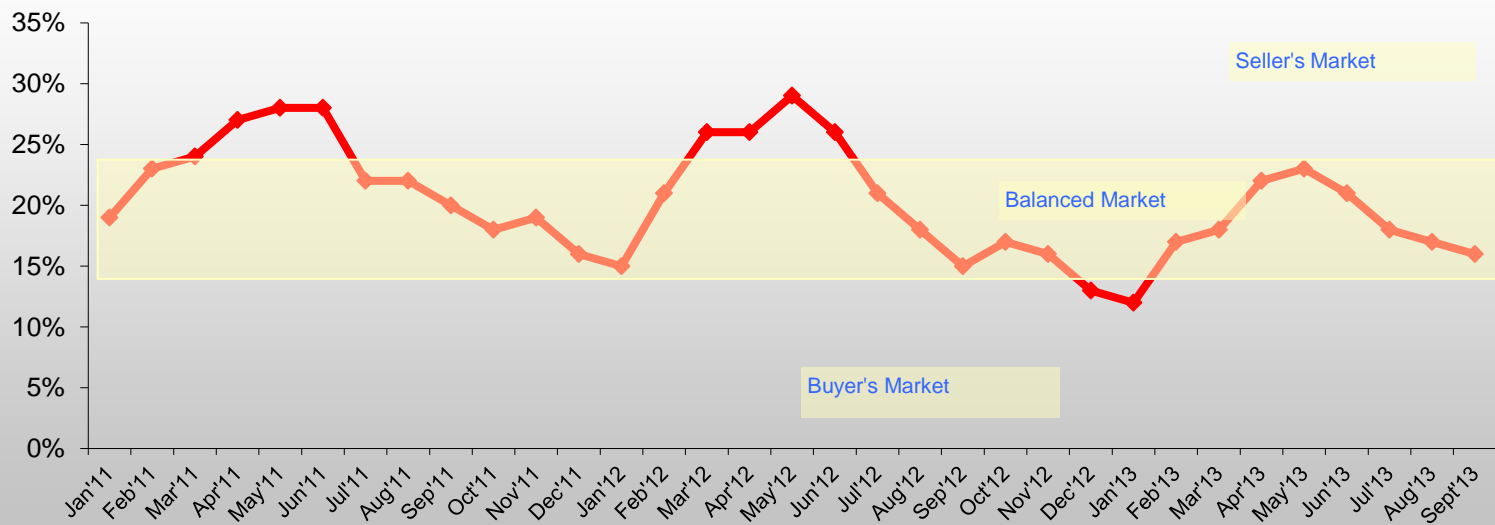
Months of Supply



Source: OREB

Royal LePage Performance Realty

Sales To Inventory Ratio - Ottawa



Source: OREB