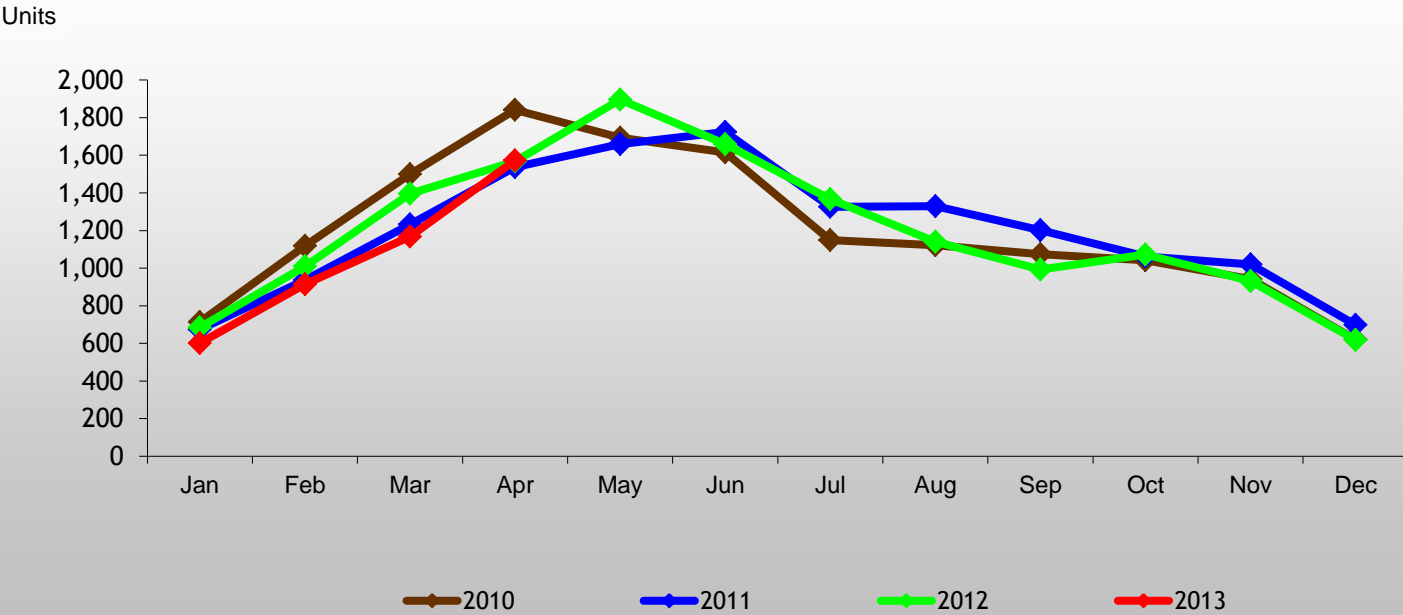


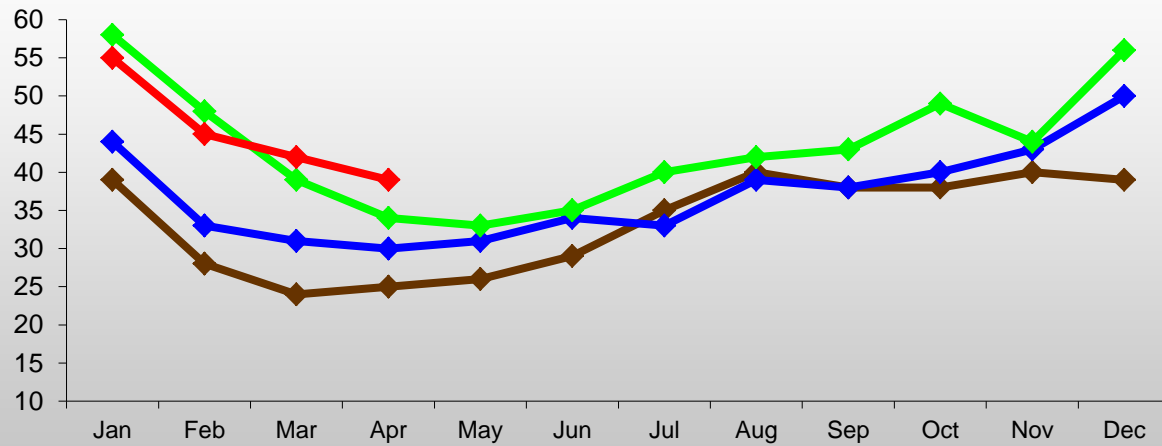
Ottawa MLS® Unit Sales



Source: OREB

Average Selling Time

Days



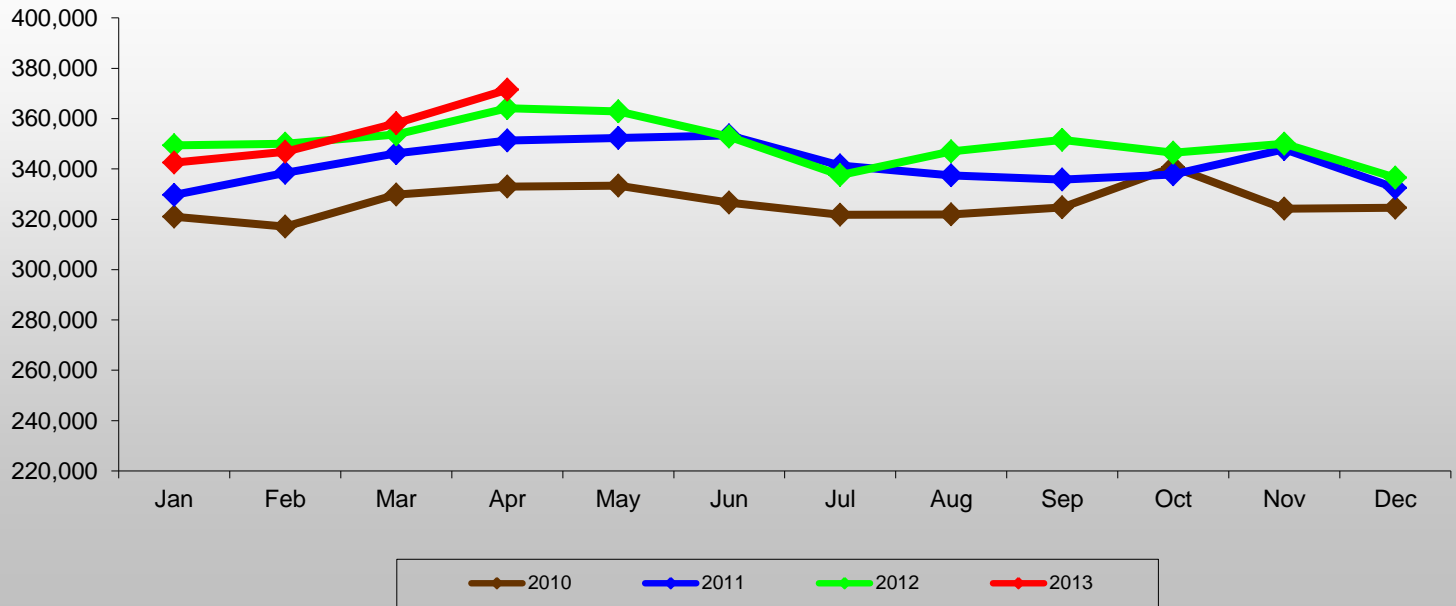
—◆— 2010 —◆— 2011 —◆— 2012 —◆— 2013

Source: OREB

Royal LePage Performance Realty

Average Sale Price

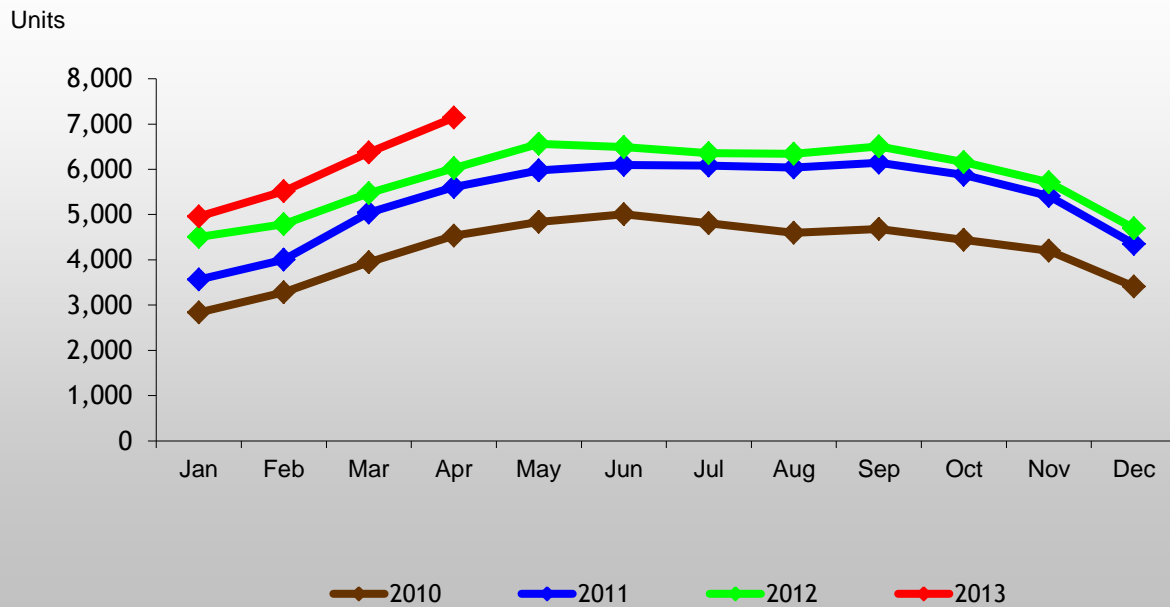
Avg. Sale \$



Source: OREB

Royal LePage Performance Realty

Ottawa MLS® Listing Inventory

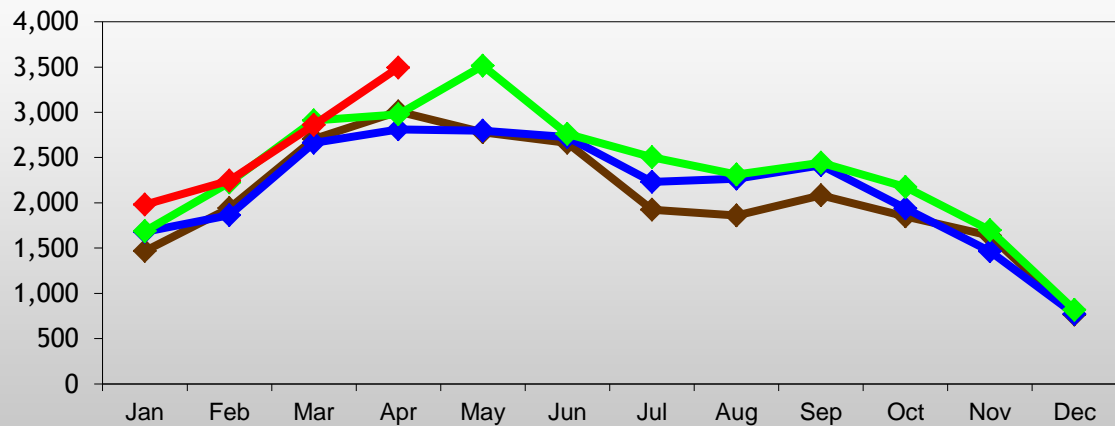


Source: OREB

Royal LePage Performance Realty

Ottawa MLS® ListingsTaken

Units



—◆— 2010 —◆— 2011 —◆— 2012 —◆— 2013

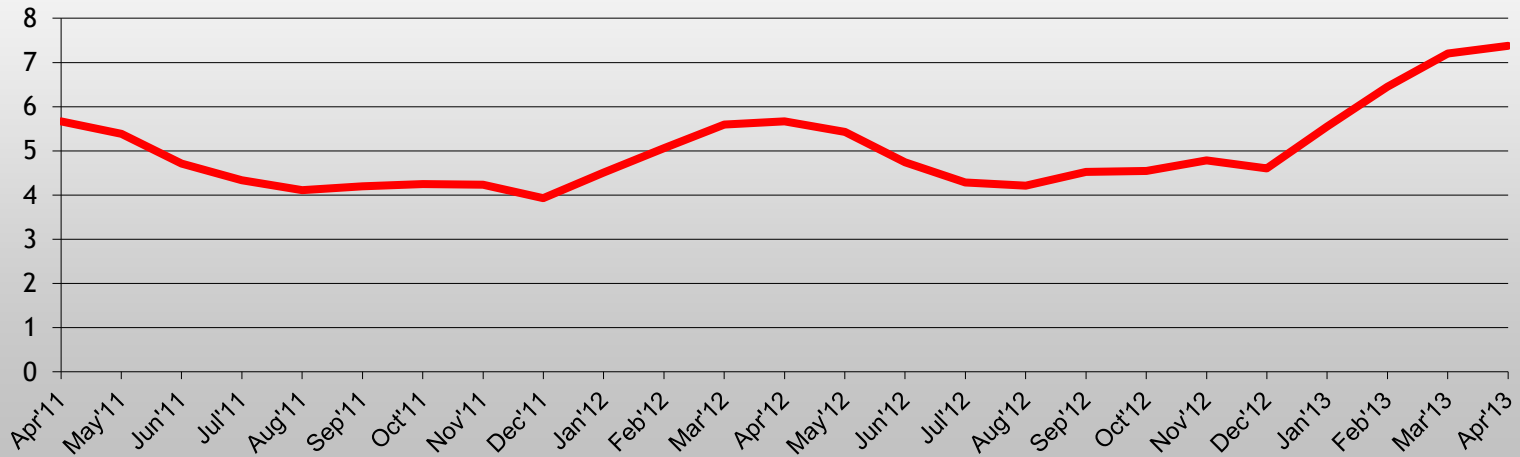
Source: OREB

Royal LePage Performance Realty

Inventory Absorption Rate

The absorption rate is the # of months it would take to sell off existing listing inventory at current pace of sales

Months of Supply



Source: OREB

Royal LePage Performance Realty

Sales To Inventory Ratio - Ottawa

